

# DataPA<sup>®</sup> OpenAnalytics

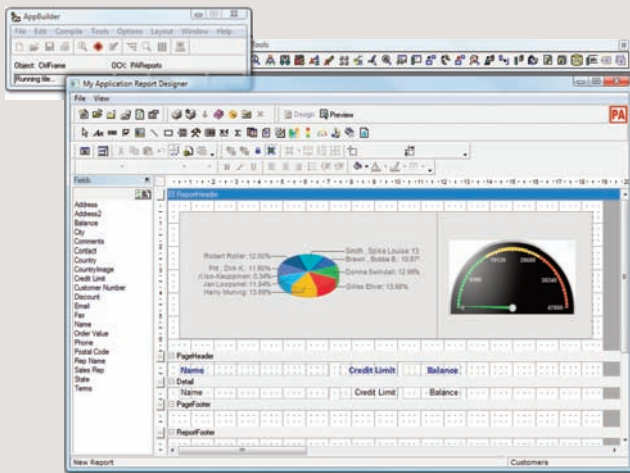
Full SDK designed by Progress experts for Progress developers

## Regain reporting Add LIVE analysis Boost revenue

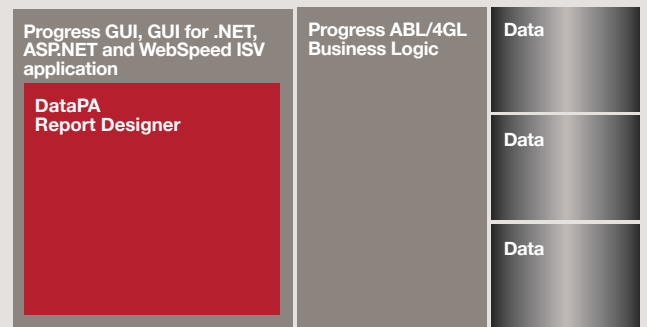
Enables ISVs to quickly produce and embed visually rich interactive reports.



DataPA Report Designer embedded in a Progress GUI window



Embedding DataPA Reports functionality



Simple API reduces the development time required to embed DataPA. Powerful and intuitive WISYWIG report designer reduces the time required to create visually rich reports.

Direct integration with the Progress ABL/4GL reduces the time required to define data sets for reports and reduces the time required to run a report.

Any data source

### Solves all document and reporting requirements, rapidly

- > Simple and intuitive to use.
- > Reduce development with rapid data build, design and integration capabilities;
  - Direct ABL/4GL or Progress schema integration enables fast data build for reports.
  - Drag and drop functionality enables visually rich and interactive reports and system documentation to be designed in minutes.
  - Open standards enables seamless rapid integration capabilities;
    - Comprehensive SDK for Progress and .NET applications.
    - Full compatibility with Progress GUI, GUI for .NET, native.NET, ASP.NET and WebSpeed.
    - Compatibility with all Progress-based security models.
    - SOA and SaaS compliance.
- > Secure, high performance across LAN/WAN and internet.
- > Deliver enhanced reporting and analysis functionality; include live reporting capability direct from within Microsoft Excel.
- > Single tool, Progress-focused solution.

### Example Application Areas

- > Reporting; operational, adhoc, customised.
- > System document production.
- > Business performance reporting.
- > Label printing.
- > DataPA Report Designer is part of the DataPA OpenAnalytics suite which powers scalable business intelligence functionality and enables live reporting and analysis for all, from the boardroom to the shop floor.

### Benefits

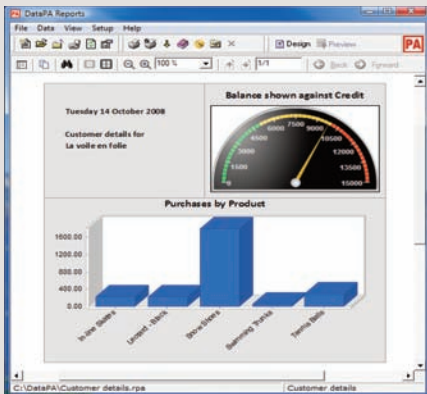
- > Increase competitive advantage with a superior, cost-effective product offering.
- > Reduce development time, risk and cost with a Progress-driven, proven, robust and scalable solution.
- > Access immediate revenue opportunities from first-class reporting for OpenEdge10 eg. upgrading Report Builder.
- > Boost revenue by providing extra valuable reporting and analysis functionality at all user levels.
- > Reduce overheads by enabling customers to customise their own reports.
- > Access scalable revenue streams by offering a full-featured, Progress-focused, real-time, self-service business intelligence solution.

### DataPA's versatility and ease of use drives immediate first-class Reporting opportunities for OpenEdge10 and much more. Advantages include;

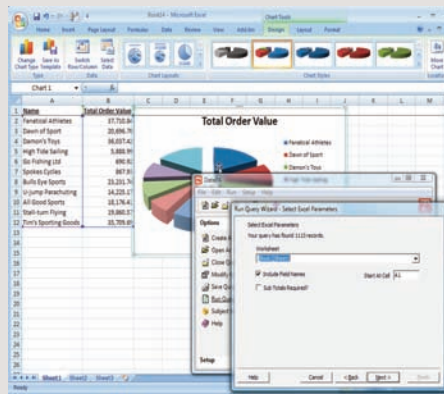
#### Visually rich reports created with a significant reduction in development time, risk and cost

- > DataPA enables rapid and seamless integration of data into reports using Progress ABL/4GL syntax and direct integration with business logic.
- > Control the report process from familiar Progress or .NET code - from creation through running the report to display, printing and /or exporting.
- > Incorporate web-based reporting quickly. A full API enables integration with Progress GUI, .NET forms, WebSpeed and ASP .NET.

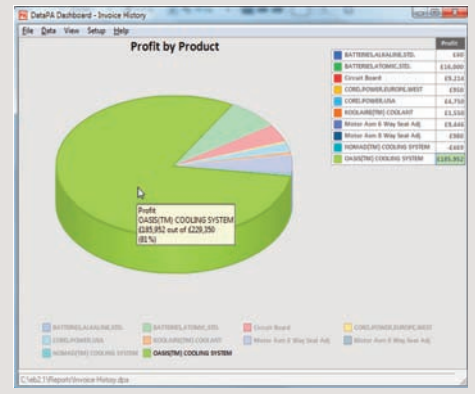
Now end users at all levels can access, present and use more meaningful information by themselves



Informative, visually rich reports



Convenient data access direct from the Excel menu bar



Impressive, interactive dashboard functionality

**Generate data for reports, quickly, flexibly and cost-effectively, regardless of complexity**

- > With DataPA's unique use of the Progress AppServer, your developers' own ABL/4GL can be re-used to generate data for reports, queries and dashboards reducing future maintenance time and costs and enabling complex reports that include multiple data sets and sub reports.

**Enable better performance, cost-effectively over networks**

- > The Progress AppServer enables reports, dashboards and queries to run with real-time efficiencies securely across virtually any network including the internet. And with less database resource required, DataPA reduces the cost of data access versus ODBC, JDBC or ESQL connections commonly used by other tools.

**Offer further end user customisation solutions – quickly and easily**

DataPA's unparalleled ease-of-use empowers developers and end-users alike. Through DataPA's OpenAnalytics suite, you can offer a series of incremental applications including the ability to:

- > **Enable your customers to customise their own reports.** With DataPA, your customers can quickly and effectively customise their own reports within your application.
- > **Rapidly deploy highly analytical, real-time, business intelligence solutions, with ease.** With DataPA, enterprise-wide productivity is realised within hours and geographic reach is easily and cost-effectively extended via the DataPA Enterprise web browser capability.
- > **Empower end users to access and define their own information requirements.** With DataPA, everyone, not just the IT department can create reports, queries and dashboards – from the senior board, all the way across the business.

Whatever your customers need, DataPA's versatility will provide the answer from a single product – faster, more easily and more cost-effectively than ever before.

The DataPA OpenAnalytics SDK gives developers access to the OpenAnalytics suite which is an in-memory solution incorporating; DataPA Reports, DataPA Dashboard, DataPA Enterprise thin client web interface and DataPA Microsoft Addins. A scheduler function is also available as an additional option.

**Boost revenue from extra reporting and analysis functionality at all levels**

- > Offer a full spectrum of reports and system documents from reporting and interactive business performance monitoring to label printing. DataPA also includes new and exciting levels of visual and analytical reporting functionality that are easy-to-use for all levels of user - whether new users or advanced IT users. Functionality includes;
  - > A wide range of visually rich graphs and chart options
  - > Static and dynamic images
  - > Multiple level grouping
  - > Calculated fields, statistical and cumulative totals
  - > Sub-reports
  - > Drill down reports
  - > Key Performance Indicators [KPIs]
  - > Barcodes

All rendered visually or directly to all commonly used formats such as .pdf, HTML, XML, Word, Excel, text and images.

**Join leading organisations world-wide who rely on DataPA including sectors such as insurance, retail, healthcare, manufacturing, local and central government and pharmaceuticals.**

"DataPA have proven to be more progressive and innovative in meeting the demands of our customers through their willingness to listen to customer needs. The core advantage of DataPA is the flexibility and ability to suit different classes of users."

**Pro-Sys, Canada.**

"DataPA provides an excellent high quality solution backed by responsive customer support."

**GYBA, Netherlands**

"DataPA allows us to easily create reports that were impossible without the involvement of our IT department."

**Housing & Property Dept, North Lanarkshire Council**

"Without doubt, DataPA, has accelerated productivity across multiple departments. Managers thank me for enabling their users to directly access the types of information they had only dreamt about and had been waiting years for."

**Twinnings of London, UK, Tea manufacturer.**

**FOR FURTHER DETAILS**

**DataPA**

**DataPA Limited**  
15 Pitreavie Court  
Pitreavie Business Park  
Dunfermline, Fife  
KY11 8UU, UK

**Tel: +44 (0)1383 749 590**  
**Email: sales@datapa.com**  
**www.datapa.com**

© DataPA Limited

Powered By  
**PROGRESS**